



jordan fishwick

BRAMHALL
Abingdon Road



**Abingdon Road,
Bramhall, SK7 3EZ**

Guide Price £450,000

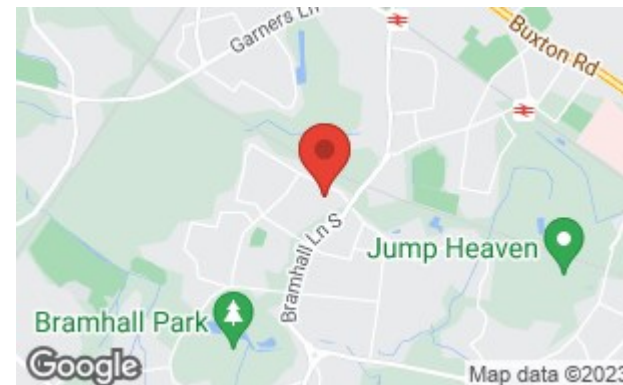


The Property

A great FOUR BEDROOM DETACHED family home which has been WELL MAINTAINED over the years with lovely gardens and a quiet location on a POPULAR CUL-DE-SAC in Bramhall. The living space is warmed by gas central heating, which is further complemented by uPVC double glazing and includes a generous lounge, separate dining room, conservatory extending the full width of the property, breakfast kitchen over 20ft and a downstairs WC, with the first floor providing four good sized bedrooms and a shower room. Externally, a block paved driveway provides parking for a number of vehicles and in turn leads to a covered carport and single garage with electric doors, with attractive gardens to front and rear and gated access to either side. *No onward chain*

Directions

SK7 3EZ



- Four bedroom detached family home
- Quite cul-de-sac location
- Two separate reception rooms
- Generous conservatory
- Breakfast kitchen over 20ft
- Downstairs WC
- Main family shower room
- uPVC double glazing & gas central heating
- Block paved driveway & single garage
- Attractive gardens to the front & rear

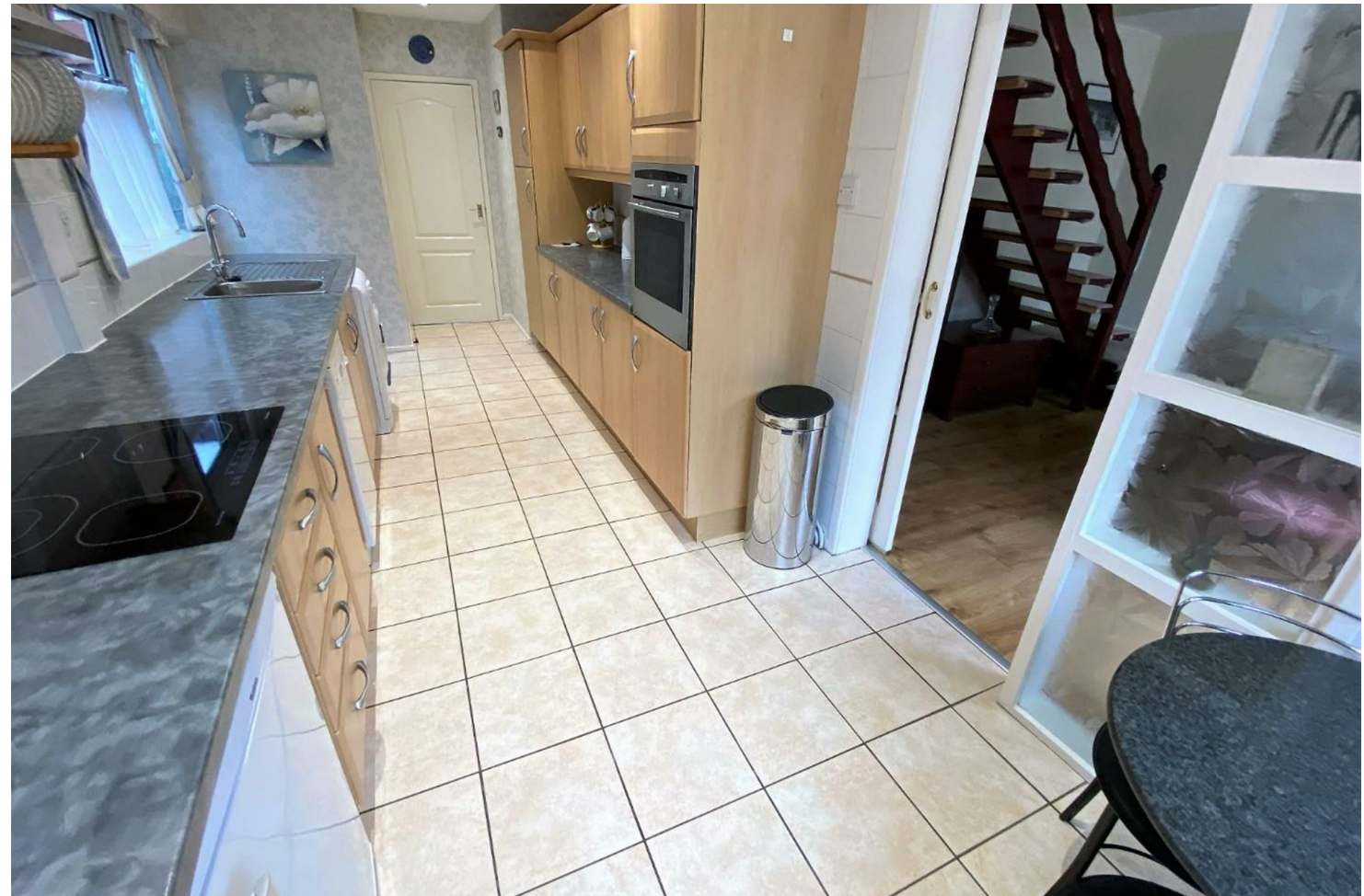
Postcode - SK7 3EZ

EPC Rating - D

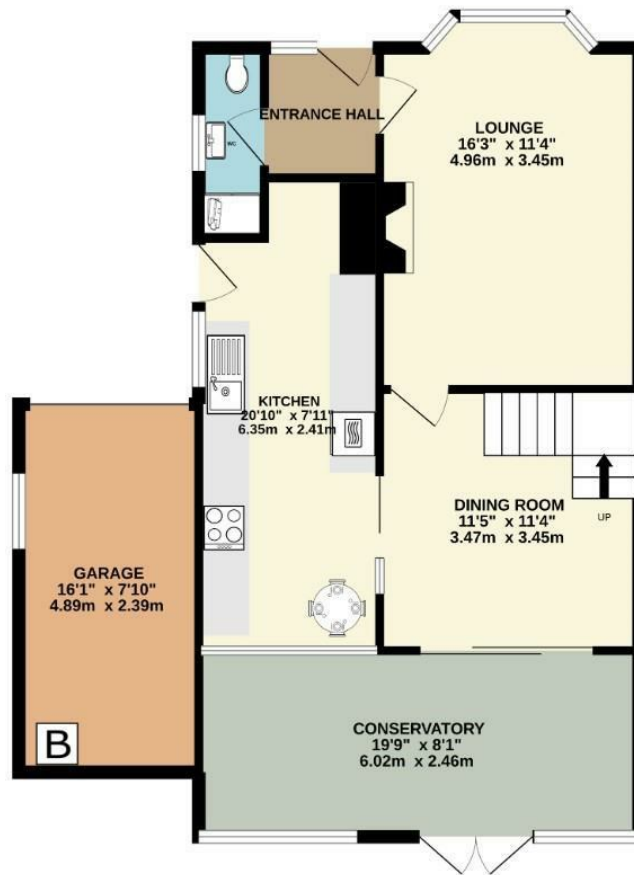
Floor Area - 1288.00 sq ft

Local Authority - SMBC

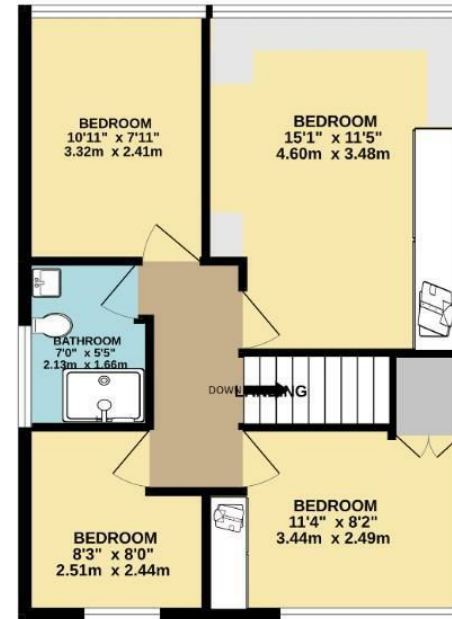
Council Tax - E



GROUND FLOOR
784 sq.ft. (72.8 sq.m.) approx.



1ST FLOOR
505 sq.ft. (46.9 sq.m.) approx.



TOTAL FLOOR AREA : 1288 sq.ft. (119.7 sq.m.) approx.
Measurements are approximate. Not to scale. Illustrative purposes only
Made with Metropix ©2022



These particulars are believed to be accurate but they are not guaranteed and do not form a contract. Neither Jordan Fishwick nor the vendor or lessor accept any responsibility in respect of these particulars, which are not intended to be statements or representations of fact and any intending purchaser or lessee must satisfy himself by inspection or otherwise as to the correctness of each of the statements contained in these particulars. Any floorplans on this brochure are for illustrative purposes only and are not necessarily to scale.

Offices also at: Wilmslow, Macclesfield, Hale, Sale, Chorlton, Glossop, Manchester & Salford

757-759 Wilmslow Road, Didsbury Village, Manchester

0161 445 4480

didsbury@jordanfishwick.co.uk
www.jordanfishwick.co.uk